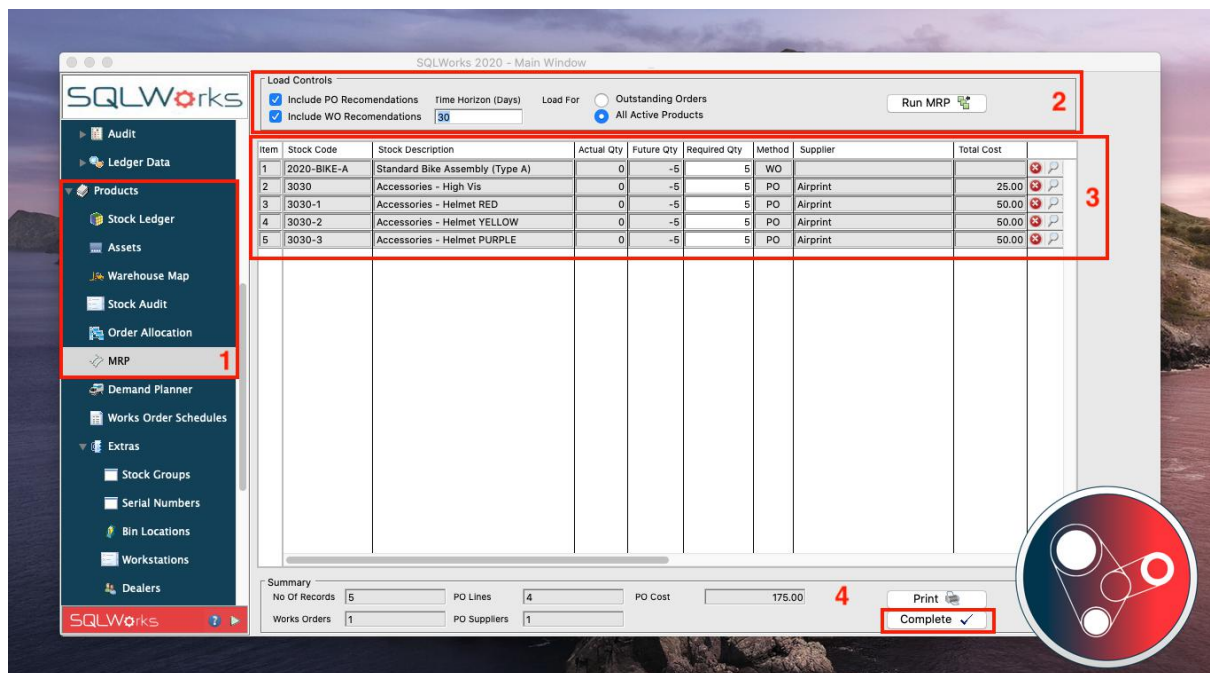


Introduction to MRP



MRP is based on demand within a certain "Time Horizon". Demand = outstanding sales order qty within this time horizon, less any PO or WO changes that are due before then

Initially you will need to set Preferences within SQLWorks to use MRP, instructions on setting MRP preferences can be found [here](#).

Running MRP

If you have scheduled demand from Sales orders, you can create Work Orders and Purchase Orders by running MRP.

1. MRP can be found within the Products module from the Navigation Bar on the left.
2. Configure your 'Load Controls'; Include PO recommendations for any buying requirements, and/or WO recommendations for any items that require to be built. input a time frame into the 'Time Horizon' and make your selection in 'Load For'; to run for Outstanding orders to meet sales demand or All Active products for when you want to replenish stock in your warehouses, as well as your outstanding orders.

To generate your PO's and WO's with your chosen criteria select 'Run MRP'.

3. You will be presented with a list which details
 - Stock Code and Description
 - Actual qty = qty NOW
 - Future qty = Estimated qty at end of time horizon based on dues dates
 - Required Qty = the qty that will be reordered on PO or manufactured on WO
 - Method = will make PO or WO
 - Supplier = who the item will be ordered with

- Date = which can be preferred PO delivery due date OR the WO deadline date
- Cross Icon = removes the line from the list
- Magnifying Glass Icon = shows a prompt explain where the figure comes from and allows you to open any transaction listed for review

Clicking on the magnifying glass will open the MRP Suggestion window which allows you to drill down into further detail and look into demand specifications.

From this window you can see a summary of the movements of this stock item, any reorder requirements to meet the reorder level, and even open and view the Works Order and Sales Order demand for this stock item.

Item	Date	Message	Ref	Qty In	Qty Out	Cummulative
1	Today	Current Qty	Actual Qty	0	0	0
2	Overdue	Works Order In	010075	5		5
3	13-Aug-2020	Sales Order Out	012607		5	0
4	13-Aug-2020	Sales Order Out	012608		5	-5
5	N/A	Reorder Qty of 0	MRP reorder	5		0

5 Records

4. A summary of the MRP run is shown at the bottom, you can also Print the results by clicking on the 'Print' button.

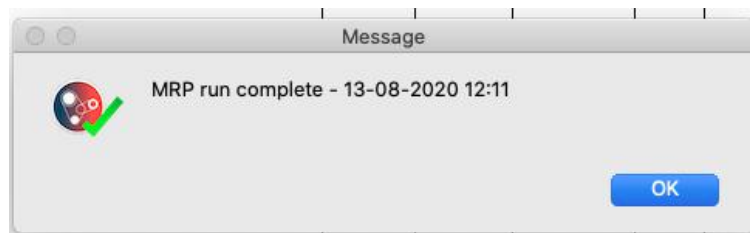
Clicking the 'Complete' button will generate the required works order/purchase orders.

Dependant on manufacturing demand, you will be prompted to generate purchase orders, with a total cost of these PO's, and works orders in a pop-up message box, click 'Yes' to continue.

You will be prompted with another message 'Really sure? This action is not reversible', to continue click on 'Yes'.

If any of your ordered items comprise of component parts, you will be prompted to repeat the MRP process, click 'Yes' to continue. You will be presented with details on required components. To generate PO's and WO's for each level of the MRP run, select Complete and follow the prompts as explained above.

When all required Work orders and Purchase Orders have been generated you will be presented with the message 'MRP run complete' with the date and time.



Click OK to complete the process.

Your MRP run has now automatically generated all of the POs and WOs for you ready to be sent to your suppliers and shop floor to be built.