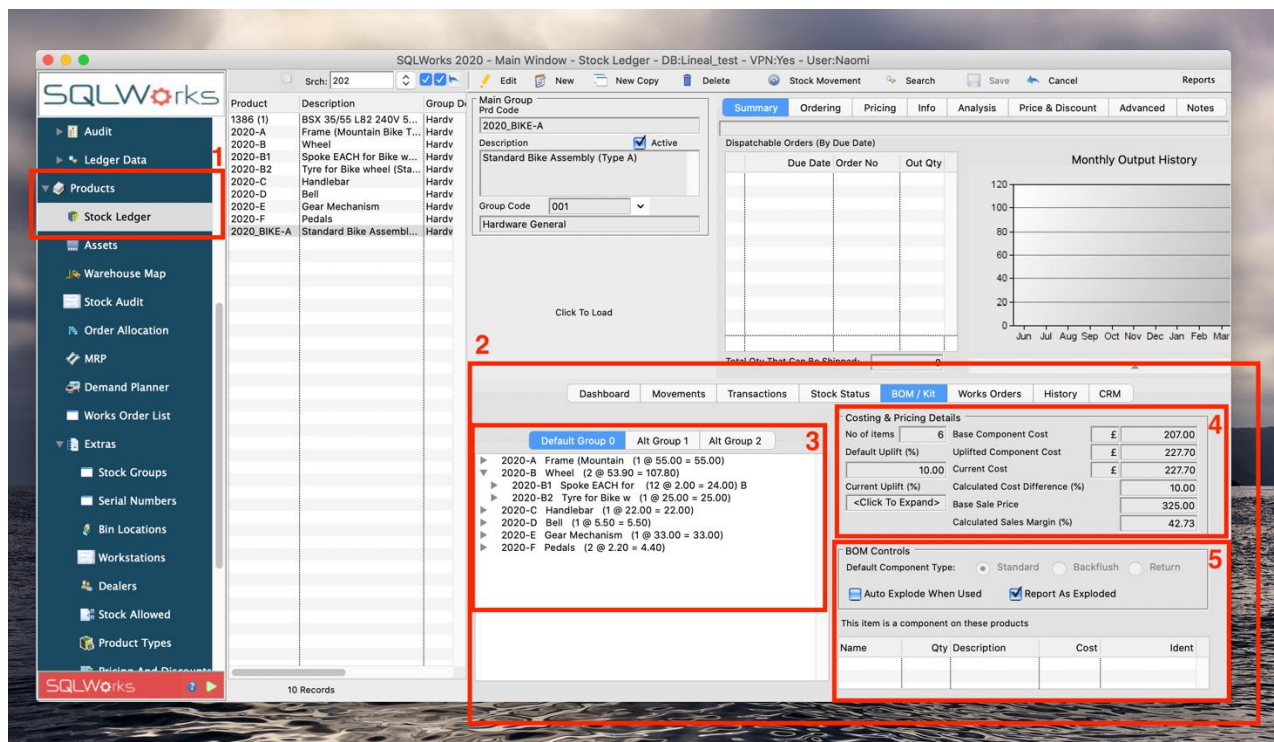


Introduction to BOMs



SQLWorks includes a BOM/kit tool able to budget for and build manufactured products using a selection of saved Bill of Materials (BOM).

1. BOMs is accessible to all users and can be found within the Stock Ledger screen under the 'Products' module in the main Navbar.
2. Clicking the 'BOM/Kit' Tab opens the BOM information for the selected stock item, and users should click the 'Setup BOM' button if using these tools for a given stock item for the first time.
3. SQLWorks can save up to 3 alternate BOMs for each manufactured item with different part lists and costings for each. This allows you to have cheaper or faster build options for any item. You can quickly swap between preset BOMs in the works order by right clicking in the component list.

Each stock item in your SQLWorks stock ledger can be both a 'parent' (made from its stock item 'children' – its components) or a 'child' of another stock item 'parent'. Right-clicking opens options to 'add child' (component part) including values for both the components and associated labour costs. Please refer to our help guide on [How to Set Up a Stock Item for Manufacturing](#) for more information.

Saved builds can include many components, sub-components, and more levels as needed. There is an option with the right click function to Import and Export BOM details from a spreadsheet.

4. On the right hand side of the panel are fields displaying the 'Base Component Cost' (the total value of the component parts as worked out by your saved SQLWorks stock valuation model) the 'Uplifted Component Cost' (the total uplift value once percentage uplift such as labour or assembly costs have been applied to each component for this build) and the 'Current Cost' with your assigned sale cost for the finished product.

The BOM price will be re-calculated automatically as component parts change, or if you have disabled this feature, by pressing the 'Re-calculate' button.

Users can update the cost details for a build, allowing for any recent changes to stock ledger components, their value or assembly uplift costs. You can also use saved shortcuts in the quick select menu of the Stock Ledger to view 'Parent Items' and 'Child Items' for easy searching.

5. The panel below the cost window, shows some BOM specific controls such as the Default component type, which is selected when adding a child item to a bill of materials. In the table below, when viewing a child stock item in the stock ledger, will list all products that this component is a part of.

SQLWorks manufacturing gives you a toolkit to organize the manufacture of BOMs from countless components, and to keep track of costs at every stage of the production line.